

DECLARATION OF PERFORMANCE N.88

Product type: Balcony profile DRIP

(1) Product identification code: Product group 39

(2) Serial number: 39 700x

(3) Intended use: the balcony profile made of aluminium serves to drain water from balconies and terraces.

(4) Manufacturer: Celox spol. s r. o., Záhradná 583/52, 900 23 Viničné

Declaration:

We hereby declare that there is no harmonized standard for this product group and therefore it is not subject to the CE standard.

(9) Declared performances: The performance of the product is specified in the technical data sheet which forms an integral part of this declaration.

This declaration is issued under the sole responsibility of the manufacturer referred to in point (4).

Ivan Fischer
Director general

Viničné, 1. 7. 2018

TECHNICAL DATA SHEET OF THE PRODUCT

Balcony profile DRIP

Use

Is a finishing profile with a gutter (40 mm overhang) for laying on a prepared gradient coating. The height of the finishing edge is 9 mm. It is suitable for constructional structures with contact waterproofing as well as with separator, diffusion and waterproofing film. In the lower part of the profile, there are drainage holes, which provide perfect drainage of water vapour or possibly water, which may penetrate between the profile and tiling during the profile installation. We get a clean and perfect ending of the tiles by using a closed edge. The profile is suitable for ceramic tiles flooring as well as for resin flooring (stone carpets).

Characteristics

- Leak tightness in drip areas
- Perfect water drainage from the tiling
- Resistance to corrosion and weather
- Simple and fast assemblage
- Aesthetic
- Perfect drainage of humidity accumulated beneath the tiling
- The profile is classified in a certified system

Technical parameters

Length: 2,5 m

Colour: natural, elox silver, brown, grey

RAL colour: according to Qualicoate certificate

Material: Al, thickness 1,3 mm

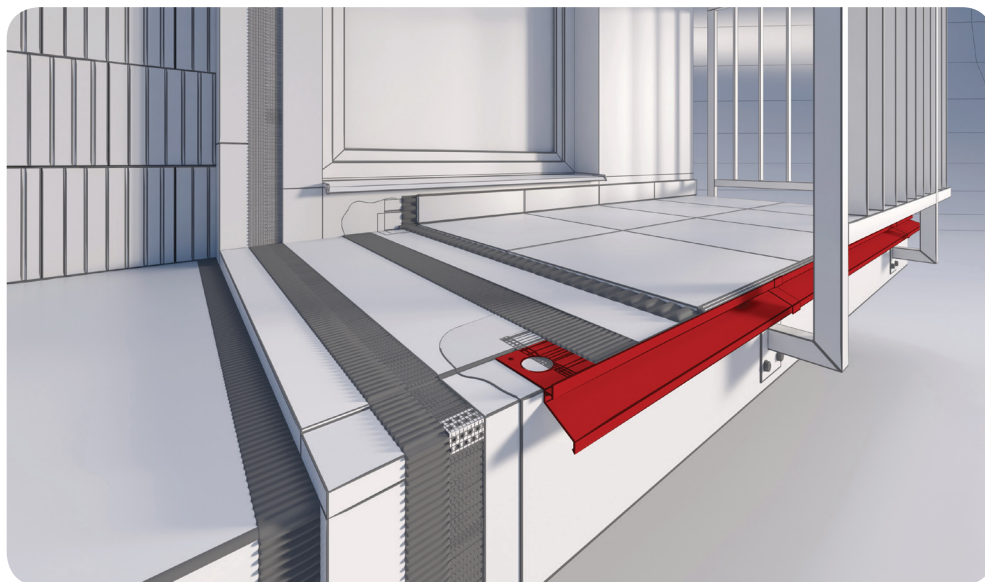
Overhang: 40 mm

Pointing: Polymer-based cement (TKK MS)

Packaging: carton 12 pcs, pack 5 pcs

Type of underlay

Cement and other underlying layer, which have the appropriate stiffness and loading capacity. Or wedge plates EPS.



Preparation of the base

The base must be load-bearing, flat and free of impurities. The cement underlying layers must be cured, matured with duly dilatation. Along the balcony edge, lowering of approx. 3 mm must be made so its surface will be at the same level as the base surface after the profile assemblage. Lowering can be made as follows:

1. In case, that the cement underlying layer is fresh - by immersing an assembly template into fresh mortar.
2. In case, that underlying mortar is stiff - by laying the assembly template to the base area and evening up the upper area by levelling mortar.
3. A groove cut into the wedge EPS

Tools

Folding ruler or measuring tape, aluminium cutting saw knife, mixer or low-speed electric drill, stainless steel smoothing trowel, painters' brush, mason spatula or trowel, steel notched trowel (4 mm). It is permissible to use hand or mechanical saws for aluminium cutting. It is not permissible to cut profiles with tools, which cause thermal effects (rapid temperature increase). Angle grinder for example.

Conditions of implementation

The assemblage of profiles needs to be performed under conditions appropriate for insulation and assembly materials, such as sealing mortar, mechanical or chemical joints, other materials and in accordance with technical data sheets of these materials.

Installation

- 1 Spread the first layer of two component highly flexible waterproofing on the prepared surface by a steel trowel.
- 2 Seal the point of contact between floor and wall with a constantly flexible waterproof tape, which will be put into the waterproofing layer and push it thoroughly with a trowel
- 3 Spread a thin waterproofing layer to the balcony edges within the balcony profile width. The balcony profile based on aluminium with the anodised surface will be laid into it Start installation with angle brackets. After setting their position, mark the place of mechanical fixation, drill holes, insert the plastic part of a rawl plug, then mount the angle brackets in order to measure out other sections of the straight profiles. Straight sections need to be measured in a way, that dilatation gaps with a width of approximately 3 to 5 mm between the profiles and solid elements of the building remain on its joints. Be aware of the proper and straight laying of the corner profiles. Screw the screws anchored in rawlplugs after sealing mortar is hardened.
- 4 Cover the aluminium balcony profile with butyl tape.
- 5 Fix the connectors horizontally from below the profile at the dilatation gaps level (profiles and corner profiles joints). Spread The second waterproofing layer to the underlay and wall. Waterproof tape and aluminium profile will be covered by it.
- 6 When using a system with separation matting after the waterproofing gets dried (max. 24 h) apply a thin layer of cement glue (Class S2FE- S1) to the underlay using a steel notched trowel (4 mm) into which the separation matting is inserted. Separating matting shall end at the rear side of the drain gutter.
- 7 By using a steel notched trowel (notch size depends on tiling type), apply cement glue to the separation matting, to which the tiles will be glued
Maximum tiles dimension is 33x33 cm. It is recommended to use a tile width of 9 mm at least and light tones.
- 8 Glue shall be applied to the underlay as well as to the tiling (class C2 - S1 at least) or as the case

may be you can use butter floating technique.

Stabilize it and expel air by tapping it with a rubber hammer. Point the tiling 24 hours later.

- 9 Apply filler with a rubber squeegee (rubbing it obliquely to gaps direction at an angle of 45°). Clean the area with a clean sponge after drying, the recommended gap width is 6 mm.
- 10 Be aware, that it is necessary to keep a gap of 6 mm width at least between the profile „nose“ and tiling. Apply a dilatation cord from above the drain holes. Remove the protective film from the drain holes before applying the cord. Film serves only for the protection of holes when applying adhesive screed.
- 11 Space between the profile („nose“) and tiling shall be filled with elastic sealant (for outdoor use, e.g. polyurethane). The gap between tiling and plinth should be 3 to 6 mm wide. Insert the dilatation cord into the gap and then fill free sections with the polyurethane sealant.
- 12 Remove the protective film after finishing the installation.

In case of using another type of waterproofing, the connection of the profiles needs to be carried out in accordance with the specification of the given insulation type. Dilatation: maximum dimensions of the indoor dilatation unit are 3x3 m

Corrosion resistance

Aluminium reacts in the air with oxygen, and an extremely slight oxidic layer is created. Even though it is thick just a few hundredths of a micrometer, it provides perfect protection against corrosion because of its density. In the event of damage, it will be restored by itself. Anodic oxidation (anodising) increases the thickness of an oxide layer and thus improves corrosion protection. In the case of the anodised profiles and supplements (corners, angles) there may be a slight change of tone. In the welded area of the corner and angle profiles, there may be a tone change, which does not constitute a defect.

General installation instructions

Wear goggles during the execution of the works. If the profiles get dirty during the installation, it is possible to clean the profile quickly using water. Dried profiles shall be cleaned using an appropriate cleaning agent which does not damage the varnished surface. Follow the instructions specified in product technical data sheets or other reference documents required by law and use materials appropriate for the balcony and terrace usage in respect of the use of other materials, especially sealing mortars, adhesive mortars, joints, reinforcing tapes, elastic seals and others. The manufacturer is not liable for the damages caused by the use of a product, which does not satisfy the product function or by using inappropriate accompanying materials and using inappropriate tools. Therefore, it is necessary to perform the works in accordance with the project, technical instructions, relevant standards, rules of building skill and safety and health legislation.

General operational instructions

Clean the profiles at least twice a year. When cleaning, use clean water and a cloth, which does not scratch the surface. It is forbidden to use strongly acidic or strongly alkaline cleaning agents as well as surfactants, which could react with aluminium. It is forbidden to use organic solvents, containing esters, ketones, alcohol, aromatic compounds, glycol esters, chlorinated hydrocarbons etc. Surface must be immediately rinsed with clean cold water after each wash. It is forbidden to use salts and chemical

Transport and storage

Transport in original carton packages, in a horizontal position. Prevent mechanical damage. Store in rooms that will protect them from fouling, deformation and scratches, in cartons of up to 10 layers.

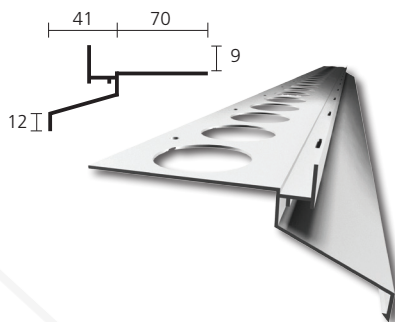
Packing

Balcony profile - DRIP: length 2,5 lm, 12 pcs in carton packages

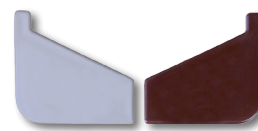
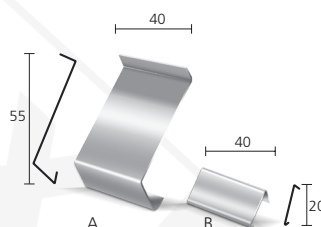
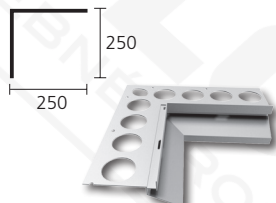
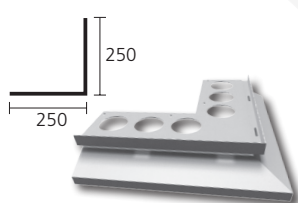
Corners, Angles: 10 pcs in carton packages

Connector: 5 pcs

Balcony profile DRIP dimensions

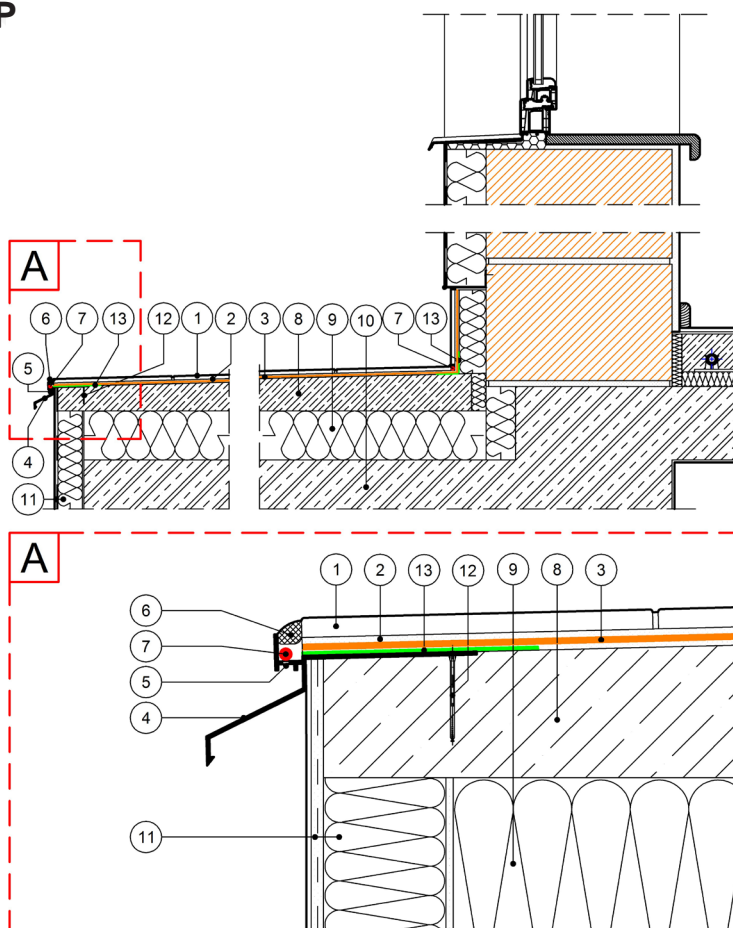


Accessories



Example of use Balcony profile - DRIP

- 1 - ceramic tiles
- 2 - elastic frost-proof adhesive mortar
- 3 - separator film CS or CI film
- 4 - balcony profile - DRIP
- 5 - drain hole
- 6 - sealant
- 7 - sealing polyurethane cord
- 8 - cement gradient coating
- 9 - thermal insulation
- 10 - balcony structure
- 11 - thermal insulation + plastering
- 12 - fixing screw
- 13 - butyl tape - special





Celox spol. s r.o.
Družstevná 33/A, 900 23 Viničné,
Tel.: +421 33 647 6573

www.celox.sk, celox@celox.sk

! ATTENTION:

Since the release of this „Technical data sheet,“ the previous version becomes invalid.

The above information shall refer exclusively to the general conditions for the use of our products, and they are not a substitute for the technical project. In case of use in different conditions, the contractor is required to verify, if our products are suitable for use at these conditions.

In liaison with products of the company CELOX, we recommend to use materials of the verified manufacturers. Installation instructions are only indicative and may differ from the selected project as well as from the technology of a particular supplier of the entire system solution.

